



## Registry Tip

# Cascade functionality for Allocations made easier to use

Release/Revision Date	Location of change in this document	Comment
August 28, 2003		Initial Release

**Audience:** All stakeholders

**Purpose:** This tip informs users that the Registry team has added a new button to Allocation screens to make it easier to use the cascade functionality.

**Background:** In the past, a user had to key in all information when using the query or edit allocation screen and know who had cascaded data to them.

**Key Principles:** The new “button” has been added to all Allocation Query and Edit screens. (See graphics below to see how button has been added to allocation screen)

By clicking the CascadeSAF button, a user can see if their facility has been named on an allocation (a cascade has been created) and if they have responded, or not, to that cascade.

The lookup window will display the allocation header information for all allocations that have been filed that named the reporting facility in the stream ID field, thereby creating a cascade.

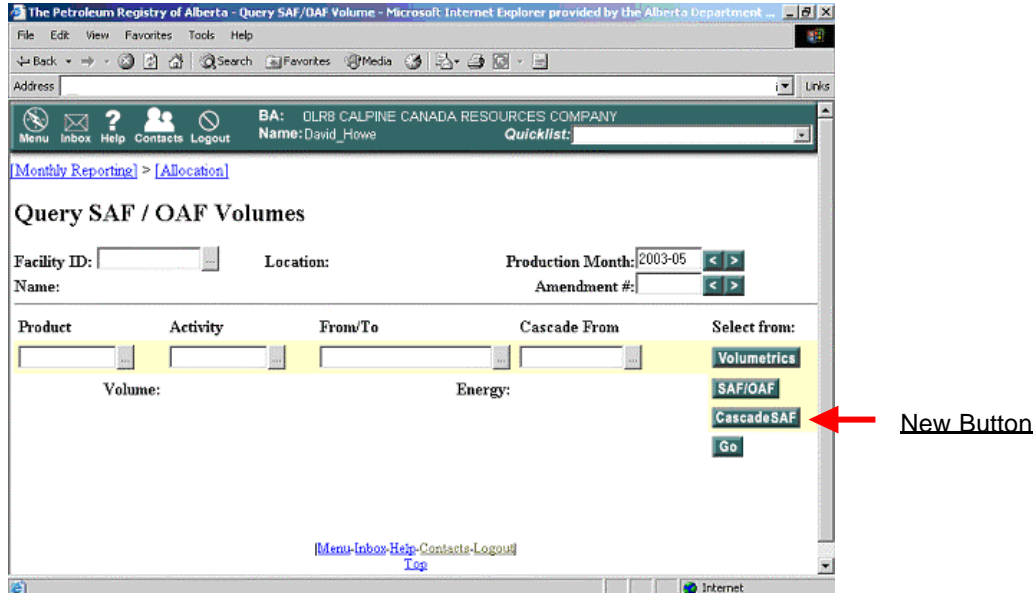
The applicable volume/energy will also be displayed, in addition to an indicator that identifies whether or not a response has been filed.

This flag will be set to “Y”, “N” or “?”. The “?” is displayed when “ALL” has been reported in the “from/to” field, since the response may have reported a specific facility in the from/to field, meaning that the cascade would be “partially” responded to.

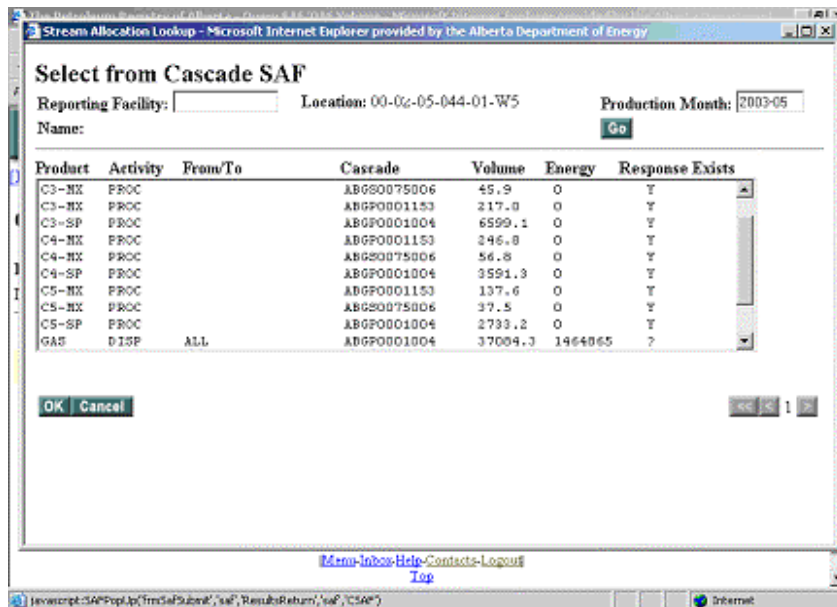
This will save time and effort related to the cascade process.



Example: Query screen with the “new” CascadeSAF button (see red arrow).



When the CascadeSAF button is chosen, users will be taken to page that displays Cascade Lookup details.



**More Information:** Please contact the Registry Service Desk.