



# Learning Aid: Saskatchewan Spreadsheet Upload Specifications



Last Revised: November 2023

THIS MATERIAL IS CONFIDENTIAL AND SHALL NOT BE USED FOR ANY OTHER PURPOSE OR DISCLOSED TO ANY OTHER PARTY WITHOUT PRIOR APPROVAL BY PETRINEX.



## Change Log

Date	Description
November 2023	Royalty Tax Payer Worksheet – End Date Comments
September 2023	Added SK Non-Hydrocarbon Gas Valuation Spreadsheet Upload Specifications
March 2023	Royalty Tax Payer Worksheet – Revision # updated and new product HELIUM
April 2022	Appendix A – Province/Territory/State/Country Codes. Added MX - Mexico
May, 2021	Royalty Tax Payer (RTP) Worksheet – Revision # updated
February 2021	Royalty Tax Payer (RTP) Worksheet
April 2020	Oil Valuation - Royalty Tax Payer RTP Worksheet
September 2020	Appendix D Volumetric Product Codes - New Product Code - Hydrogen



## Table of Contents

Reference Materials .....	4
Introduction .....	5
Create and Save Data within a Spreadsheet .....	7
Volumetrics Worksheet Format .....	10
Combined SAF/OAF (Volume) Worksheet Format .....	11
SAF (Factors) Worksheet Format.....	12
OAF (Factors) Worksheet Format .....	13
Pipeline Splits Worksheet Format – Version 003 .....	14
Oil Valuation – Royalty Tax Payer (RTP) Worksheet Format .....	16
Oil Valuation – Purchaser Worksheet Format .....	17
Oil Valuation – Subsequent Purchaser Worksheet Format.....	18
Oil Valuation – Sales to Subsequent Purchasers Worksheet Format.....	19
Oil Valuation – Deliveries to Refineries Worksheet Format .....	20
Gas Plant Valuation Worksheet Format.....	21
Waste Plant Submission Worksheet Format.....	22
Royalty Tax Payer Worksheet Format.....	23
Non-Hydrocarbon Gas Valuation Worksheet Format .....	24
Appendix A – Province/Territories/State/Country Codes .....	25
Appendix B – Facility Codes .....	27
Appendix C – Miscellaneous Codes .....	28
Appendix D – Volumetric Product Codes.....	29
Appendix E - Stream Type Codes.....	31
Appendix F – Activity Codes .....	32
Appendix G – Waste Codes.....	33



## Reference Materials

This Learning Aid is intended as a supplement to the Learning Centre Learning Modules. The following modules will provide you with additional information on Petrinex reporting practices:

- 5.01 Manage Volumetric Submissions
- 5.02 Manage Volumetric Submissions for Meter Stations
- 5.03 Manage Volumetric Submissions for Batteries and Injection Facilities
- 5.04 Manage Volumetric Submissions for Gas Plants and Gathering Systems
- 5.05 Manage Volumetric Submissions for Terminals
- 5.07 Manage Waste Plant Submissions
- 5.09 Manage Oil/LPG Pipeline Splits
- 5.12 Manage Allocations – SOV/SAF/OAF
- 5.16 Manage Oil Valuation – Royalty/Tax Payer
- 5.17 Manage Oil Valuation - Purchaser
- 5.18 Manage Gas Valuation Submissions
- 5.19 Request Valuation Reports
- 5.20 Request Pricing Submissions
- 5.21 Request Pricing Reports
- 5.24 Manage Non-Hydrocarbon Gas Valuation Submissions
- 5.25 Request Non-Hydrocarbon Gas Valuation Reports



## Introduction

There are two main ways that you can submit monthly data to Petrinex. You can submit data:

- **Online:** Petrinex's online pages allow you to enter data that is reported to Petrinex.
- **Batch upload:** In a batch submission, you create data in your internal system, and then upload it to Petrinex. The standard for batch file submission is XML (Extensible Markup Language). You can also create your data in spreadsheets and upload this data directly to Petrinex. You can only upload data created within a spreadsheet if that data is saved as a CSV (Comma Separated Values) file.

You may upload data in spreadsheets for the following work processes:

- **Volumetrics** – you submit mandatory information as required by the Government of Saskatchewan (GOS)
- **Allocations** – you submit optional industry-to-industry reporting. Allocations can be submitted in the following two formats:
  - Stream and Owner Allocation Factors (SAF and OAF)
  - Combined SAF/OAF allocation with volumes
- **Pipeline Splits** – Where the product is oil, the pipeline split process is **required** for all splits. Delivering facility operators must complete the split process to all shippers, owners and other facilities that delivered to the facility. The operator will report the split volumes allocated to Royalty Take In Kind (RTIK) companies in this process.
  - Note: The owner (royalty/tax payer) and purchaser volume allocations for oil are used by the Oil Valuation Royalty/Tax Payer and Purchaser processes for applying sales valuation information to the volumes.
- **Oil Valuation**
  - **Royalty Tax Payer** – you submit pricing and clean oil transportation for volumes which have been identified in the pipeline split process at the unit or facility level.
  - **Purchaser** – you submit pricing information for raw crude volumes purchased from royalty tax payers identified in the pipeline split process at the facility/owner level.
  - **Subsequent Purchases** – subsequent purchasers submit oil valuation subsequent purchaser data for pipeline stream purchases. Note: the CSV upload functionality for Subsequent Purchases can only be used for amendments to prior period months up to and including July 2013 production month.
  - **Sales to Subsequent Purchasers** – sellers submit oil valuation subsequent purchaser data for pipeline stream sales to subsequent purchasers. Note: the CSV upload functionality for Subsequent Purchases can only be used for amendments to prior period months up to and including July 2013 production month.
  - **Deliveries to Refineries** – you submit oil deliveries to refineries.



- **Gas Valuation**
  - **Gas Plant** - gas plant operators and owners enter their gas plant purchases and sales for all products.
  - **Non-Hydrocarbon Gas Valuation** - required when the operating battery BA has reported production of helium and an RTP record has been created for the product Helium.
- **Royalty Tax Payer (add and change)** – Well, unit and injection facility operators submit information related to the business associates that are responsible for payment of royalty/tax. This information will be used by GOS in the calculation of oil and gas royalties and production taxes. The Royalty/Tax Payer Add and Change has been moved to Learning Aid: Infrastructure Spreadsheet Upload Specifications.
- **Waste Plant Submissions** - you submit mandatory information as required by the (GOS).

**Note: Petrinex will not accept uploads of data created in spreadsheets for work processes other than those listed above.**

For monthly data each spreadsheet upload is considered a full-facility replacement for the current production month. Each upload that you make to Petrinex overwrites earlier uploads, so new submissions must include all data for the month. If you report additional data after the first submission, then you must resubmit the initial data, along with the new data. For example, for volumetrics, if you initially only report oil data, and later submit gas, water or helium data, the second submission must also include the oil data.



## Create and Save Data within a Spreadsheet

You must follow specific rules to create and save data in a spreadsheet for uploading to Petrinex. For example, you can only upload data created within a spreadsheet if that data is saved as a CSV (Comma Separated Values) file. Petrinex does not accept data saved in any other format. You may create spreadsheets using any spreadsheet software (such as Microsoft Excel) that can save as a CSV file.

For illustration purposes only, Microsoft Excel conventions are used in the following step-by-step procedures. In this example, we use the terms spreadsheet and worksheet. A worksheet is an individual page that is organized into columns and rows and is always stored in spreadsheet. A spreadsheet may contain many worksheets. Note: Microsoft Excel refers to spreadsheets as workbooks.

Follow these steps to create and save data within a spreadsheet before uploading the data to Petrinex.

**Step 1.** Download the worksheet template for the work process data that you want to upload.

To download the worksheet template, complete the following steps.

- a. Go to the Learning Centre website page → Learning Job Aids
- b. Click the Job Aid entitled “Saskatchewan Spreadsheet Upload Templates”.

**Step 2.** There is a separate template for each work process. Create a new worksheet from the appropriate template.

- a. Create a new worksheet within your existing spreadsheet.
- b. Copy the provided template into your new worksheet or type the header row from the template into your new worksheet. Row 1, the header row, must contain the column descriptions in your new worksheet.

**Note:** You may only include one work process (volumetrics, allocations, pipeline splits, waste plant submission, valuation (oil or gas), or royalty/tax payer, etc.) per worksheet, but you may include multiple facilities when submitting a file to Petrinex. The order of the header row must match the order that is specified in the templates for each work process (volumetrics, allocations, or pipeline splits, waste plant, etc.).

	A	B	C	D
1	Verb	Noun	Format Version	Submitting Facility Province
2				
3				
4				

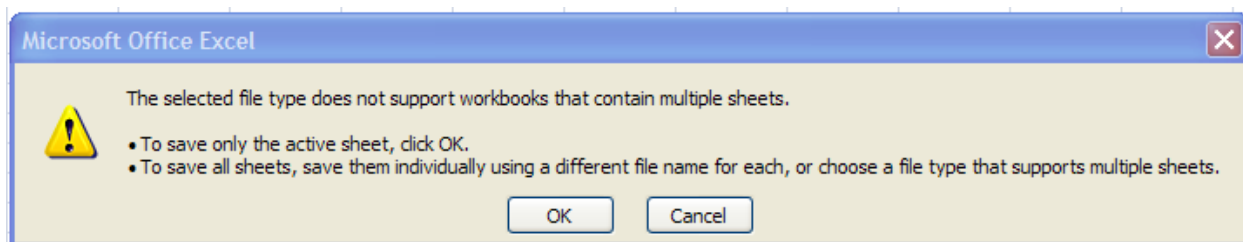
Header Row

**Step 3.** Enter the data from your existing spreadsheet into the new worksheet. Starting in Row 2, copy, move, paste, or link the appropriate data from your spreadsheet into the new worksheet.

- More than one facility may be included in this worksheet.
- Follow the worksheet format that is included in this document to ensure all columns are completed as required.
- A data element (cell) that is not required on any particular row may be left blank (other than row 1).



- Step 4.** Select/highlight all data on the worksheet. Choose Format – Cells – Number (tab) and choose Text. Click OK. All data on the worksheet must be in text format prior to saving in a CSV format.
- Step 5.** Save your new worksheet. You may only save the worksheet in a CSV format for uploading to Petrinex. Further, only the active worksheet may be saved as a .CSV file. Multiple worksheets, within a single spreadsheet, must be saved as individual .CSV files, and uploaded separately.
- On the File menu, select **Save As**
  - Type the file name that you want to use
  - Select the .CSV file type
  - Click **Save**. The following message appears.



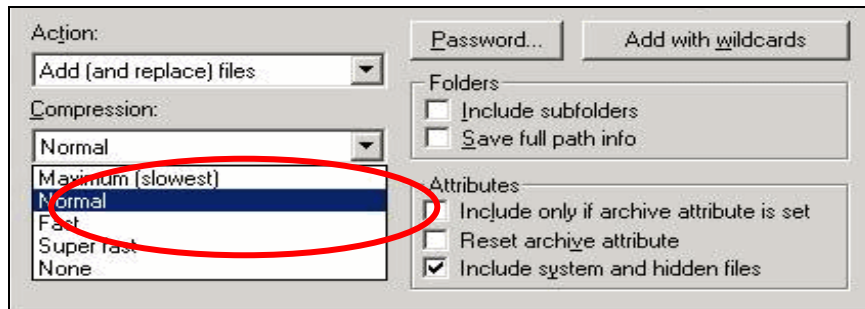
- Click **OK** to save your active worksheet.

If you were to open this worksheet at this point, you will lose all of the preceding zero's in any of the data. Example BA Code 0123 would show as 123, Facility Identifier 0000123 would show as 123. If you were to upload this document to Petrinex in this manner it would not be accepted as it would not meet the required schema. Therefore, we need to create a worksheet in text to upload.

- Open a new Excel worksheet, and click on Data to import your saved worksheet into this new worksheet.
- Click "From Text" to open the Import Text file window
- Highlight the document that you previously saved and click Import.
- This opens the Text Import Wizard:
  - Click the radio button – Delimited and click Next
  - Change the radio button under Delimiters from Tab to Comma and click Next.
  - You will want to change all of the columns to be Text rather than General. To do this – Hold down the Shift Key and using the scroll bar on the bottom bring it as far to the right as you can. This will highlight all of the columns.
  - Click the radio button Text
  - Click Finish
  - You are now asked where you want to put the data? Click the radio button – Existing Worksheet and click OK.
  - Save the new worksheet in a .csv file format – you can overwrite the original if you choose to ensure that you do not try to upload the wrong version.

Large files may be compressed, using the file compression utilities PKZIP or WinZip, or the built-in compression utility within Microsoft XP (referred to as NTFS compression). When using WinZip, files must be compressed in the **Normal** compression mode, as shown below. It is recommended that any files over 5Mg should be zipped.





Note: only one file can be included in a zipped file.

- Step 6.** Submit the saved worksheet (with the .CSV file extension) to Petrinex. You may only upload one file to Petrinex at a time.
- Access Petrinex, using your Web browser.
  - On the Main Menu, select **Data Submission → Batch Upload**.
  - Type in your .CSV file location and name or use the **Browse** button to locate the file.
  - Click **Upload**. You will receive an onscreen message indicating if the file is uploaded successfully. We recommend that you record the file incoming key number. If the batch was to fail, this number will help the Petrinex staff in assisting in determining the cause of the failure.
  - You will receive an e-mail notification detailing the results of the upload when Petrinex has processed the submitted upload.



## Volumetrics Worksheet Format

<u>Spreadsheet Column</u>	<u>Data element</u>	<u>Example Field Content</u>	<u>Format</u>	<u>Required on each row? Y/N</u>	<u>Comments</u>
A	Verb	ADD		Y	ADD is the only valid verb
B	Noun	VOLUMETRIC		Y	VOLUMETRIC is the only valid noun
C	Revision	001	(prefix with 0's)	Y	Current is 001
D	Submitting Facility Province	SK	2 chars	Y	Must be a valid Prov/State, see Appendix A
E	Submitting Facility Type	BT	2 chars	Y	Must be a valid facility type, see Appendix B
F	Submitting Facility Identifier	0001001	7 digits (prefix with 0's)	Y	
G	Production Year-Month	2012-11	YYYY-MM	Y	Dash is mandatory
H	Reference	BTY 07-05	max 16 digits	N*	Optional reference to your internal system
I	From/To Fac/Well Province	SK	2 chars	N*	Must be a valid Prov/State, see Appendix A
J	From/To Fac/Well Type	BT	2 chars	N*	Must be a valid facility type, see Appendix B; Miscellaneous code, see Appendix C; or WI for well
K	From/To Fac/Well Identifier	0002002	max 16 digits (prefix with 0's)	N*	7 digits for a facility 16 digits for a well
L	Product	OIL	max 12 chars	Y*	Must be a valid product code, see Appendix D – Volumetric Product Codes
M	Activity	REC	max 12 chars	Y*	Must be a valid activity code, see Appendix F
N	Hours	123	max 3 digits	N*	
O	Volume	123456789.1	10 digits (1 decimal)	Y*	All products are 1 decimal only
P	Energy	1234567890	10 digits (0 decimals)	N*	Energy can be reported for: Gas Disp – as required Gas Prod (well gas production) <ul style="list-style-type: none"> <li>• Gas well mandatory</li> <li>• Oil well producing Gas optional</li> </ul>
Q	CCI Code	9	1 char	N*	Consecutive Concurrent Injection Code
R	Proration Product	OIL	max 12 chars	**	Only valid for the products Oil, Water and Gas
S	Proration Factor	1.23456	6 digits (5 decimals)	**	

\*\* If Proration Product and Proration Factor are included on a row, then all cells marked with \* in the required column must be blank.

Note: Proration rows must appear at the end of a facility's submission and cannot be combined with Facility or Well Activity rows.



## Combined SAF/OAF (Volume) Worksheet Format

<u>Spreadsheet Column</u>	<u>Data Element</u>	<u>Example Field Content</u>	<u>Format</u>	<u>Required on each row? Y/N</u>	<u>Comment</u>
A	Verb	ADD		Y	ADD is the only valid verb
B	Noun	SAFOAF		Y	SAFOAF is the only valid noun
C	Revision	001	(prefix with 0's)	Y	Current is 001
D	Submitting Facility Province	SK	2 chars	Y	Must be a valid Prov, see Appendix A
E	Submitting Facility Type	GP	2 chars	Y	Must be a valid Facility Type, see Appendix B
F	Submitting Facility Identifier	0001001	max 7 digits (prefix with 0's)	Y	
G	Production Year- Month	2012-11	YYYY-MM	Y	Dash is mandatory
H	Product	GAS	max 12 chars	Y	Must be a valid product code, see Appendix D
I	Activity	DISP	max 12 chars	Y	Must be a valid Activity Code, see Appendix F
J	From To Fac/Well Province	SK	2 chars	N	Must be a valid Prov, see Appendix A
K	From To Fac/Well Type	MS	2 chars	N	Must be a valid Facility Type, see Appendix B
L	From To Fac/Well Identifier	0002002	max 7 digits (prefix with 0's)	N	Can use ALL. Should use ALL when responding to cascades using ALL.
M	Cascade Facility Province	SK	2 chars	N	Must be a valid Prov, see Appendix A
N	Cascade Facility Type	GP	2 chars	N	Must be a valid Facility Type, see Appendix B
O	Cascade Facility Identifier	0001003	max 7 digits (prefix with 0's)	N	
P	Reference	1234	max 16 digits	N	Optional reference to your internal system
Q	Stream Fac/Well Province	SK	2 chars	Y	Must be a valid Prov, see Appendix A.
R	Stream Fac/Well Type	WI	2 chars	Y	Must be a valid Facility Type, see Appendix B; or WI for well.
S	Stream Fac/Well Identifier	191010100125W300	max 16 digits (prefix with 0's)	Y	Max. 7 digits for a facility. Max. 16 digits for a well.
T	Owner Identifier	12345	5 chars	Y	Must be valid BA ID
U	Volume	123456789.0	10 digits (1 decimals)	Y	
V	Energy	1234567890	10 digits (0 decimals)	Y	



## SAF (Factors) Worksheet Format

<u>Spreadsheet Column</u>	<u>Data Element</u>	<u>Example Field Content</u>	<u>Format</u>	<u>Required on each row? Y/N</u>	<u>Comment</u>
A	Verb	ADD		Y	ADD is the only valid verb
B	Noun	SAF		Y	SAF is the only valid noun
C	Revision	001	(prefix with 0's)	Y	Current is 001
D	Submitting Facility Province	SK	2 chars	Y	Must be a valid Prov/State, see Appendix A
E	Submitting Facility Type	GP	2 chars	Y	Must be a valid Facility Type, see Appendix B
F	Submitting Facility Identifier	0001001	7 digits (prefix with 0's)	Y	
G	Production Year-Month	2012-11	YYYY-MM	Y	Dash is mandatory
H	Product	GAS	max 12 chars	Y	Must be a valid product code, see Appendix D
I	Activity	DISP	max 12 chars	Y	Must be a valid Activity Code, see Appendix F
J	From/To Fac/Well Province	SK	2 chars	N	Must be a valid Prov/State, see Appendix A
K	From/To Fac/Well Type	MS	2 chars	N	Must be a valid Facility Type, see Appendix B
L	From/To Fac/Well Identifier	0002002	7 digits (prefix with 0's)	N	
M	Cascade Facility Province	SK	2 chars	N	Must be a valid Prov/State, see Appendix A
N	Cascade Facility Type	GP	2 chars	N	Must be a valid Facility Type, see Appendix B
O	Cascade Facility Identifier	0001003	7 digits (prefix with 0's)	N	
P	Static Factor Indicator	YES	Yes/No	N	
Q	Reference	1234	max 16 digits	N	Optional reference to your internal system
R	Stream Fac/Well Province	SK	2 chars	Y	Must be a valid Prov/State, see Appendix A.
S	Stream Fac/Well Type	WI	2 chars	Y	Must be a valid Facility Type, see Appendix B; or WI for well.
T	Stream Fac/Well Identifier	191010100124W300	max 16 digits (prefix with 0's)	Y	Max. 7 digits for a facility. Max. 16 digits for a well. Max 5 for production entities.
U	Factor Volume	0.1234567890	11 digits (10 decimals)	Y	
V	Factor Energy	0.1234567890	11 digits (10 decimals)	Y	



## OAF (Factors) Worksheet Format

<u>Spreadsheet Column</u>	<u>Data Element</u>	<u>Example Field Content</u>	<u>Format</u>	<u>Required on each row? Y/N</u>	<u>Comment</u>
A	Verb	ADD		Y	ADD is the only valid verb
B	Noun	OAF		Y	OAF is the only valid noun
C	Revision	001	(prefix with 0's)	Y	Current is 001
D	Submitting Facility Province	SK	2 chars	Y	Must be a valid Prov, see Appendix A
E	Submitting Facility Type	GP	2 chars	Y	Must be a valid Facility Type, see Appendix B
F	Submitting Facility Identifier	0001001	max 7 digits (prefix with 0's)	Y	
G	Production Year-Month	2012-11	YYYY-MM	Y	Dash is mandatory
H	Stream Fac/Well Province	SK	2 chars	Y	Must be a valid Prov, see Appendix A.
I	Stream Fac/Well Type	WI	2 chars	Y	Must be a valid Facility Type, see Appendix B; or WI for well.
J	Stream Fac/Well Identifier	191010100125W300	max 7 digits (prefix with 0's)	Y	Max. 7 digits for a facility. Max. 16 digits for a well.
K	Product	GAS	max 12 chars	Y	Must be a valid product code, see Appendix D
L	Activity	DISP	max 12 chars	Y	Must be a valid Activity Code, see Appendix F
M	From/To Fac/Well Province	AB	2 chars	N	Must be a valid Prov, see Appendix A
N	From/To Fac/Well Type	MS	2 chars	N	Must be a valid Facility Type, see Appendix B
O	From/To Fac/Well Identifier	0002002	max 7 digits (prefix with 0's)	N	Max. 7 digits for a facility. Max. 16 digits for a well.
P	Cascade Facility Province	SK	2 chars	N	Must be a valid Prov, see Appendix A
Q	Cascade Facility Type	GP	2 chars	N	Must be a valid Facility Type, see Appendix B
R	Cascade Facility Identifier	0001003	max 7 digits (prefix with 0's)	N	
S	Static Factor Indicator	YES	Yes/No	N	
T	Reference	1234	max 16 digits	N	Optional reference to your internal system
U	Owner Identifier	12345	max 5 chars (prefix with 0's)	Y	Must be a valid BA ID
V	Factor Volume	0.1234567890	11 digits (10 decimals)	Y	
W	Factor Energy	0.1234567890	11 digits (10 decimals)	Y	



## Pipeline Splits Worksheet Format – Version 003

<u>Spreadsheet Column</u>	<u>Column Header</u>	<u>Example Field Content</u>	<u>Format</u>	<u>Required on each row?</u> <u>Y/N</u>	<u>Comment</u>
A	Verb	ADD		Y	ADD is the only valid verb
B	Noun	PLSPLIT		Y	PLSPLIT is the only valid noun
C	Revision	003	(prefix with 0's)	Y	Current is 003
D	Delivering Facility Province	SK	2 chars	Y	Must be a valid Prov, see Appendix A
E	Delivering Facility Type	BT	2 chars	Y	Must be a valid Facility Type, see Appendix B
F	Delivering Facility Identifier	0091001	max 7 digits (prefix with 0's)	Y	
G	Receiving Facility Province	SK	2 chars	Y	Must be a valid Prov, see Appendix A
H	Receiving Facility Type	CT	2 chars	Y	Must be a valid Facility Type, see Appendix B
I	Receiving Facility Identifier	0002002	max 7 digits (prefix with 0's)	Y	
J	Production Year-Month	2012-11	YYYY-MM	Y	Dash is mandatory
K	Product	OIL	max 12 chars	Y	Must be a valid product, see Appendix D
L	Custody Transfer Point Facility Province	SK	2 chars	Y	Must be a valid Prov, see Appendix A
M	Custody Transfer Point Facility Type	TM	2 chars	Y	Must be a valid Facility Type, see Appendix B
N	Custody Transfer Point Facility Identifier	0003003	max 7 digits (prefix with 0's)	Y	
O	Reference	1234	max 16 digits	N	Optional reference to your internal system
P	Shipper Pipeline Contract	654871	max 20 char	N	optional
Q	Shipper Identifier	12345	max 5 char (prefix with 0's)	Y	Must be a valid BA ID
R	Shipper Owner Contract	200106	max 20 char	N	optional
S	Owner Identifier	12345	max 5 char	Y	Must be a valid BA ID
T	Purchaser Identifier	12345	max 5 char	Y	Must be a valid BA ID
U	Stream Province	SK	2 Char	N	Must be a valid Prov, see Appendix A Identifier • Oil - SK only valid province
V	Stream Type	UN	2 Char	N	Stream Id Oil – Unit only Gas - well, unit, miscellaneous



## Pipeline Splits Worksheet Format – Version 003, cont'd

<u>Spreadsheet Column</u>	<u>Column Header</u>	<u>Example Field Content</u>	<u>Format</u>	<u>Required on each row? Y/N</u>	<u>Comment</u>
W	Stream Identifier	U1234	max 16 digits (prefix with 0's)	N	Oil - Must be a valid unit identifier  Gas – must be a valid unit, well or miscellaneous code
X	Owner Volume	1234567.8	8 digits (1 decimal)	Y	
Y	Owner Energy	123456789	max 9 digits (Gas split only)	N	Gas pipeline split only
Z	Other Facility Province	SK	2 chars	N	Must be a valid Prov/State, see Appendix A
AA	Other Facility Type	BT	2 chars	N	Must be a valid Facility Type, see Appendix B
AB	Other Facility Identifier	0095005	max 7 digits (prefix with 0's)	N	
AC	OOP (out of province) Facility Operator	12345	max 20 char	N	Required if other Prov not SK
AD	Other Facility Volume	1234567.8	8 digits (1 decimal)	N	
AE	Other Facility Energy	123456789	max 9 digits (Gas split only)	N	Gas pipeline split only
AF	Other Facility Shipper Pipeline Contract	200206	max 20 char	N	optional
AG	Other Facility Shipper ID	12345	max 5 char	N	Must be a valid BA ID
AH	Other Facility Forecasted Nominated Volume	1234567.8	8 digits (1 decimal)	N	Required for full pipeline splits only. (SK does not have full pipeline splits at this time.)
AI	Other Facility Forecasted Nominated Energy	123456789	max 9 digits (Gas split only)	N	Required for full pipeline splits only. (SK does not have full pipeline splits at this time.)
AJ	Other Facility Estimated Volume	1234567.8	8 digits (1 decimal)	N	Required for full pipeline splits only. (SK does not have full pipeline splits at this time.)
AK	Other Facility Estimated Energy	123456789	max 9 digits (Gas split only)	N	Required for full pipeline splits only. (SK does not have full pipeline splits at this time.)
AL	Confirmation #			N	Not required for SK
AM	RTIK Indicator	N	Y, N or blank	N	Optional
AN	First POS	Y	Y or N	N	Optional



## Oil Valuation – Royalty Tax Payer (RTP) Worksheet Format

<u>Spreadsheet Column</u>	<u>Column Header</u>	<u>Example Field Content</u>	<u>Format</u>	<u>Required on each row? Y/N</u>	<u>Comment</u>
A	Verb	ADD		Y	ADD is the only valid verb
B	Noun	OILVALRTP		Y	OILVALRTP is the only valid noun
C	Revision	003	(prefix with 0's)	Y	Current is 003
D	Reporting BA ID	12345	max 5 char (prefix with 0's)	Y	Must be a valid BA ID
E	Submitting Facility/Unit Prov	SK	2 chars	Y	Must be a valid Prov/State, see Appendix A
F	Submitting Facility/Unit Type	BT	2 chars	Y	Must be unit (UN) or a valid Facility Type, see Appendix B
G	Submitting Facility/Unit Identifier	0095005	max 7 digits (prefix with 0's)	Y	Must be a valid unit or facility ID
H	Production Month	2012-11	YYYY-MM	Y	Dash is mandatory
I	Reference	1234	max 16 digits	N	Optional reference to your internal system Can be alpha and/or numerical
J	Delivering Fac Prov	SK	2 chars	Y	Must be a valid Prov/State, see Appendix A
K	Delivering Fac Type	BT	2 chars	Y	Must be a valid Facility Type, see Appendix B
L	Delivering Fac Identifier	0012345	max 7 digits (prefix with 0's)	Y	
M	Receiving Fac Prov	SK	2 chars	Y	Must be a valid Prov/State, see Appendix A
N	Receiving Fac Type	BT	2 chars	Y	Must be a valid Facility Type, see Appendix B
O	Receiving Fac Identifier	0012345	max 7 digits (prefix with 0's)	Y	
P	CTP Fac Prov	SK	2 chars	Y	Must be a valid Prov/State, see Appendix A
Q	CTP Fac Type	BT	2 chars	Y	Must be a valid Facility Type, see Appendix B
R	CTP Fac Identifier	0012345	max 7 digits (prefix with 0's)	Y	
S	Contract	654871	max 20 char	N	optional
T	Purchaser ID	12345	max 5 char	Y	Must be a valid BA ID
U	Volume	1234567.8	8 digits (1 decimal)	Y	All products are 1 decimal only
V	Gross Price	1234.567	7 digits (3 decimal)	Y	Price per unit of Oil in dollars
W	Clean Oil Transportation	1234567.89	9 digits (2 decimal)	Y	Cost of transportation in dollars





## Oil Valuation – Purchaser Worksheet Format

<u>Spreadsheet Column</u>	<u>Column Header</u>	<u>Example Field Content</u>	<u>Format</u>	<u>Required on each row? Y/N</u>	<u>Comment</u>
A	Verb	ADD		Y	ADD is the only valid verb
B	Noun	OILVALPURCHASER		Y	OILVALPURCHASER is the only valid noun
C	Revision	001	(prefix with 0's)	Y	Current is 001
D	Reporting BA ID	12345	max 5 char (prefix with 0's)	Y	Must be a valid BA ID
E	Production Month	2012-11	YYYY-MM	Y	Dash is mandatory
F	Reference	1234	max 16 digits	N	Optional reference to your internal system Can be alpha and/or numerical
G	Source Producer ID	12345	max 5 char (prefix with 0's)	Y	Must be a valid BA ID
H	Delivering Fac Prov	SK	2 chars	Y	Must be a valid Prov/State, see Appendix A
I	Delivering Fac Type	BT	2 chars	Y	Must be a valid Facility Type, see Appendix B
J	Delivering Fac Identifier	0012345	max 7 digits (prefix with 0's)	Y	
K	Receiving Fac Prov	SK	2 chars	Y	Must be a valid Prov/State, see Appendix A
L	Receiving Fac Type	BT	2 chars	Y	Must be a valid Facility Type, see Appendix B
M	Receiving Fac Identifier	0012345	max 7 digits (prefix with 0's)	Y	
N	CTP Fac Prov	SK	2 chars	Y	Must be a valid Prov/State, see Appendix A
O	CTP Fac Type	BT	2 chars	Y	Must be a valid Facility Type, see Appendix B
P	CTP Fac Identifier	0012345	max 7 digits (prefix with 0's)	Y	
Q	Contract	SK654871	max 20 char	N	optional
R	Density	1234.5	5 digits (1 decimal)	Y	Density of oil as KG/m3
S	Sulphur	12.3	3 digits (1 decimal)	Y	Sulphur content in G/KG
T	Submitted Volume	1234567.8	8 digits (1 decimal)	Y	Raw crude oil purchase volume
U	Gross Price	1234.567	7 digits (3 decimal)	Y	Price per unit of Oil in dollars



## Oil Valuation – Subsequent Purchaser Worksheet Format

**Note: Only to be used for amendments for prior periods up to and including July 2013 production month**

<u>Spreadsheet Column</u>	<u>Column Header</u>	<u>Example Field Content</u>	<u>Format</u>	<u>Required on each row? Y/N</u>	<u>Comment</u>
A	Verb	ADD		Y	ADD is the only valid verb
B	Noun	OILVALPURSUBSEQUENT		Y	OILVALPURSUBSEQUENT is the only valid noun
C	Revision	001	(prefix with 0's)	Y	Current is 001
D	Reporting BA ID	12345	max 5 char (prefix with 0's)	Y	Must be a valid BA ID
E	Production Month	2012-11	YYYY-MM	Y	Dash is mandatory
F	Reference	1234	max 16 digits	N	Optional reference to your internal system Can be alpha and/or numerical
G	Previous Purchaser ID	12345	max 5 char (prefix with 0's)	Y	Must be a valid BA ID
H	CTP Fac Prov	SK	2 chars	Y	Must be a valid Prov/State, see Appendix A
I	CTP Fac Type	BT	2 chars	Y	Must be a valid Facility Type, see Appendix B
J	CTP Fac Identifier	0012345	max 7 digits (prefix with 0's)	Y	
K	Contract	SK654871	max 20 char	N	optional
L	Stream Type Code	WCB	3 chars	Y	Must be a valid Stream Type, see Appendix E
M	Density	1234.5	5 digits (1 decimal)	Y	Density of oil as KG/m3
N	Sulphur	12.3	3 digits (1 decimal)	Y	Sulphur content in G/KG
O	Submitted Volume	1234567.8	8 digits (1 decimal)	Y	Stream crude oil purchase volume
P	Gross Price	1234.567	7 digits (3 decimal)	Y	Price per unit of Oil in dollars



## Oil Valuation – Sales to Subsequent Purchasers Worksheet Format

**Note: Only to be used for amendments for prior periods up to and including July 2013 production month**

<u>Spreadsheet Column</u>	<u>Column Header</u>	<u>Example Field Content</u>	<u>Format</u>	<u>Required on each row? Y/N</u>	<u>Comment</u>
A	Verb	ADD		Y	ADD is the only valid verb
B	Noun	OILVALPURSALES		Y	<b>OILVALPURSALES is the only valid noun</b>
C	Revision	001	(prefix with 0's)	Y	<b>Current is 001</b>
D	Reporting BA ID	12345	max 5 char (prefix with 0's)	Y	Must be a valid BA ID
E	Production Month	2012-11	YYYY-MM	Y	Dash is mandatory
F	Reference	SK1234	max 16 digits	N	Optional reference to your internal system Can be alpha and/or numerical
G	Subsequent Purchaser ID	12345	max 5 char (prefix with 0's)	Y	Must be a valid BA ID
H	CTP Fac Prov	SK	2 chars	Y	Must be a valid Prov/State, see Appendix A
I	CTP Fac Type	BT	2 chars	Y	Must be a valid Facility Type, see Appendix B
J	CTP Fac Identifier	0012345	max 7 digits (prefix with 0's)	Y	
K	Contract	SK654871	max 20 char	N	optional
L	Stream Type Code	WCB	3 chars	Y	Must be a valid Stream Type, see Appendix E
M	Density	1234.5	5 digits (1 decimal)	Y	Density of oil as KG/m3
N	Sulphur	12.3	3 digits (1 decimal)	Y	Sulphur content in G/KG
O	Submitted Volume	1234567.8	8 digits (1 decimal)	Y	Stream crude oil purchase volume
P	Gross Price	1234.567	7 digits (3 decimal)	Y	Price per unit of Oil in dollars



## Oil Valuation – Deliveries to Refineries Worksheet Format

<u>Spreadsheet Column</u>	<u>Column Header</u>	<u>Example Field Content</u>	<u>Format</u>	<u>Required on each row? Y/N</u>	<u>Comment</u>
A	Verb	ADD		Y	ADD is the only valid verb
B	Noun	OILVALPURDELREF		Y	OILVALPURDELREF is the only valid noun
C	Revision	001	(prefix with 0's)	Y	Current is 001
D	Reporting BA ID	12345	max 5 char (prefix with 0's)	Y	Must be a valid BA ID
E	Production Month	2012-11	YYYY-MM	Y	Dash is mandatory
F	Reference	SK1234	max 16 digits	N	Optional reference to your internal system Can be alpha and/or numerical
G	Refinery Fac Prov	SK	2 chars	Y	Must be a valid Prov/State, see Appendix A
H	Refinery Fac Type	RF	2 chars	Y	RF only
I	Refinery Fac Identifier	0012345	max 7 digits (prefix with 0's)	Y	
J	Stream Type Code	WCB	3 chars	Y	Must be a valid Stream Type, see Appendix E
K	Submitted Volume	1234567.8	8 digits (1 decimal)	Y	Stream crude oil purchase volume



## Gas Plant Valuation Worksheet Format

<u>Spreadsheet Column</u>	<u>Column Header</u>	<u>Example Field Content</u>	<u>Format</u>	<u>Required on each row? Y/N</u>	<u>Comment</u>
A	Verb	ADD		Y	ADD is the only valid verb
B	Noun	GASPLANTVAL		Y	GASPLANTVAL is the only valid noun
C	Revision	001	(prefix with 0's)	Y	Current is 001
D	Reporting BA ID	12345	max 5 char (prefix with 0's)	Y	Must be a valid BA ID
E	Reporting Facility Province	SK	2 chars	Y	Must be a valid Prov/State, see Appendix A
F	Reporting Facility Type	BT	2 chars	Y	Must be a valid Facility Type, see Appendix B
G	Reporting Facility Identifier	0012345	max 7 digits (prefix with 0's)	Y	
H	Production Month	2012-11	YYYY-MM	Y	Dash is mandatory
I	Reference	SK1234	max 16 chars	N	Optional reference to your internal system Can be alpha and/or numerical
J	Activity	SALE	max 10 chars	Y	Must be either SALE or PURCHASE
K	Product	GAS	max 12 chars	Y	Must be a valid product code, see Appendix D
L	Producer Purchaser ID	12345	max 5 chars (prefix with 0's)	Y	Must be a valid BA ID
M	Point of Purchase /Sale Fac Province	SK	2 chars	Y	Must be a valid Prov/State, see Appendix A
N	Point of Purchase /Sale Fac Type	BT	2 chars	Y	Must be a valid Facility Type, see Appendix B
O	Point of Purchase /Sale Fac Identifier	0012345	max 7 digits (prefix with 0's)	Y	
P	Contract	SK654871	max 20 char	N	optional
Q	Submitted Volume	123456789.0	10 digits (1 decimal)	Y	Sale or Purchase volume
R	Energy	1234537890	10 digits (0 decimal)	Y	Energy (valid for gas only)
S	Price	1234.5671	8 digits (4 decimal)	Y	Price per unit in dollars
T	Unit	103m3	max 5 chars	Y	Pricing Unit (103m3, GJ, m3 or tonne)



## Waste Plant Submission Worksheet Format

<u>Spreadsheet Column</u>	<u>Data element</u>	<u>Example Field Content</u>	<u>Format</u>	<u>Required on each row? Y/N</u>	<u>Comments</u>
A	Verb	ADD		Y	ADD is the only valid verb
B	Noun	WASTEPLANT		Y	WASTEPLANT is the only valid noun
C	Revision	001	(prefix with 0's)	Y	Current is 001
D	Reporting Facility Province State	SK	2 chars	Y	Must be SK
E	Reporting Facility Type	WP	2 chars	Y	WP is the only valid facility type
F	Reporting Facility Identifier	0001001	7 digits (prefix with 0's)	Y	Must be 7 digits
G	Production Month	2010-11	YYYY-MM	Y	Dash is mandatory
H	Reference Code	WP 09-03	max 16 digits	N	Optional reference to your internal system Can be alpha and/or numeric
I	From/to Fac/Well/WL Province State	SK	2 chars	N	From/to facility must be a valid Prov/State, see Appendix A
J	From/to Fac/Well/WL Type	BT	2 chars	N	Must be a valid facility type, see Appendix B; or WI for well or WL for waste location
K	From/to Fac/Well/WL Identifier	0002002	max 16 digits (prefix with 0's)	N	Maximum 7 digits for a facility and waste location Maximum 16 digits for a well
L	Waste Code	COEMUL	max 12 chars	N	Must be a valid waste code, see Appendix G
M	ND Flag	N	max 1 char	N	Must be a N or D or blank
N	Activity ID	REC	max 12 chars	Y	Must be a valid activity code, see Appendix F
O	Oil Volume	123456789.1	10 digits (1 decimal)	N	M <sup>3</sup> one decimal only
P	Water Volume	123456789.1	10 digits (1 decimal)	N	M <sup>3</sup> one decimal only
Q	Solids Volume	123456789.1	10 digits (1 decimal)	N	M <sup>3</sup> one decimal only
R	Gas Volume	123456789.1	10 digits (1 decimal)	N	10 <sup>3</sup> M <sup>3</sup> one decimal only



## Royalty Tax Payer Worksheet Format

<u>Spreadsheet Column</u>	<u>Data element</u>	<u>Example Field Content</u>	<u>Format</u>	<u>Required on each row? Y/N</u>	<u>Comments</u>
A	Verb	ADD		Y	Verb is ADD or Change
B	Noun	RTP		Y	RTP is the only valid noun
C	Revision	003	(prefix with 0's)	Y	Current is 003
D	RTP Province State	SK	2 chars	Y	Must be SK
E	RTP Type	UN	Max 3 chars	Y	WI (for a well) or UN (for a unit) or IF (for an injection facility) are currently the only valid types for RTP submission.
F	RTP Identifier	U6107	max 16 digits (prefix with 0's)	Y	Max. 7 digits for a facility. Max. 16 digits for a well. Max 5 for production entities.
G	Product	OIL	12 chars	Y	Can be OIL, GAS or HELIUM
H	Start Date	2021-02	YYYY-MM	Y	Dash is mandatory
I	End Date	9999-12	YYYY-MM	Y	RTP Information is effective up to and including this production period. Dash is mandatory. If there is no end date, use 9999-12
J	Operator BA Id	12345	5 chars	y	Must be a valid BA
K	Payer BA Id	34567	5 chars	Y	Must be a valid BA
L	Mineral Ownership	CROWN	Max 20 chars	Y	Options are Crown, Crown SSB, Freehold, Freehold WIO Exempt, Freehold FED Exempt, Freehold FED 508 Exempt
M	RTPPercent	50.00000	9 digits (5 decimal)	Y	The percentage of volume for which the BA is responsible for payment of royalty/tax.
N	WIOPercent	50.00000	9 digits (5 decimal)	N	The WIO percentage owned by the BA that is not an RTP for the well/unit/IF.



## Non-Hydrocarbon Gas Valuation Worksheet Format

<u>Spreadsheet Column</u>	<u>Column Header</u>	<u>Example Field Content</u>	<u>Format</u>	<u>Required on each row? Y/N</u>	<u>Comment</u>
A	Verb	ADD		Y	ADD is the only valid verb
B	Noun	NONHYDGAS		Y	NONHYDGAS is the only valid noun
C	Revision	001	(prefix with 0's)	Y	Current is 001
D	Reporting BA ID	12345	max 5 char (prefix with 0's)	Y	Must be a valid BA ID
E	Facility/Prov/State	SK	2 chars	Y	Must be a valid Prov/State, see Appendix A
F	Facility Type	BT	2 chars	Y	Must be a valid Facility Type, see Appendix B
G	Facility Identifier	0095005	max 16 digits (prefix with 0's)	Y	Max. 7 digits for a facility.
					Max. 16 digits for a well.
H	Product	HELIUM	16 chars	Y	Helium is the only valid product at this time.
I	Production Month	2012-11	YYYY-MM	Y	Dash is mandatory
J	ReferenceCode	1234	max 16 digits	N	Optional reference to your internal system.
K	NoSalesFlg	N	1 char	Y	Y or N only valid responses
L	EstimateFlg	N	1 char	N*	Y or N only valid responses * if K is yes, this is blank
M	ReceivingProvState	SK	2 chars	N*	Must be a valid Prov/State, see Appendix A * if K is yes, this is blank
N	ReceivingType	BT	2 chars	N*	Must be a valid Facility Type, see Appendix B * if K is yes, this is blank
O	ReceivingIdentifier	0034567	max 16 digits (prefix with 0's)	N*	Max. 7 digits for a facility.
					Max. 16 digits for a well. * if K is yes, this is blank
P	ContractNumber	654871	max 12 chars	N*	optional
Q	PurchaserID	12345	max 5 chars	N*	Must be a valid BA ID * if K is yes, this is blank * if R is yes, this is blank
R	MiscPurchaserID	M00016	20 chars	N*	ID of miscellaneous purchaser * if K is yes, this is blank * if Q is yes, this is blank
S	SalesVolume	287.6	10 digits (1 decimal)	N*	All products are 1 decimal only * if K is yes, this is blank
T	SalesPrice	634.851	10 digits (3 decimal)	N*	Price per unit of Gas in dollars * if K is yes, this is blank
U	TransportationCost	334.54	10 digits (2 decimal)	N*	Cost of transportation in dollars * if K is yes, this is blank
V	ProcessingCosts	224.54	10 digits (2 decimal)	N*	Cost of processing in dollars * if K is yes, this is blank





## Appendix A – Province/Territories/State/Country Codes

### Province/Territories Codes

AB	Alberta
BC	British Columbia
MB	Manitoba
NB	New Brunswick
NF	Newfoundland
NS	Nova Scotia
NT	Northwest Territories
NU	Nunavut
ON	Ontario
PE	Prince Edward Island
QC	Quebec
SK	Saskatchewan
YT	Yukon

Note: for Waste Plant submissions any non-Alberta waste generators or receivers will be reported as AB WL waste locations.

### State Codes

AK	Alaska
AL	Alabama
AR	Arkansas
AZ	Arizona
CA	California
CO	Colorado
CT	Connecticut
DC	District of Columbia
DE	Delaware
FL	Florida
GA	Georgia
HI	Hawaii
IA	Iowa
ID	Idaho
IL	Illinois
IN	Indiana
KS	Kansas
KY	Kentucky
LA	Louisiana
MA	Massachusetts
MD	Maryland
ME	Maine



## State Codes, Cont'd.

MI	Michigan
MN	Minnesota
MO	Missouri
MS	Mississippi
MT	Montana
NC	North Carolina
ND	North Dakota
NE	Nebraska
NH	New Hampshire
NJ	New Jersey
NM	New Mexico
NV	Nevada
NY	New York
OH	Ohio
OK	Oklahoma
OR	Oregon
PA	Pennsylvania
RI	Rhode Island
SC	South Carolina
SD	South Dakota
TN	Tennessee
TX	Texas
UT	Utah
VA	Virginia
VT	Vermont
WA	Washington
WI	Wisconsin
WV	West Virginia
WY	Wyoming

## Country Codes

MX	Mexico
----	--------



## Appendix B – Facility Codes

Facility Code	Description
BT	Battery
CS	Compressor Station
CT	Custom Treating Facility
GP	Gas Plant
GS	Gas Gathering System
IF	Injection/Disposal Facility
MS	Metering Station
PL	Pipeline
RF	Refinery
SA	Oil Satellite
TM	Terminal
WP	Waste Plant
WS	Surface Water Source
WT	Formation Water Source



## Appendix C – Miscellaneous Codes

<b>Miscellaneous Code</b>	<b>Description</b>
CO	Delivery/Sale of Natural Gas to a Commercial Customer
IN	Delivery/Sale of Natural Gas to an Industrial Customer
MC	Receipts/Deliveries of an unknown source
RC	Railcar Loading/Unloading
RE	Delivery/Sale of Natural Gas to a Residential Customer
RM	Road Maintenance Use
RO	Run Off Water
WC	Water Condensation Use
WM	Waste Materials



## Appendix D – Volumetric Product Codes

Note: These volumetric product codes are not valid for Waste Plant (WP) reporting. See Appendix G for WP Waste Codes.

General Information		
Product Code	Unit of Measurement	Description
ACGAS	10 <sup>3</sup> m <sup>3</sup>	Acid Gas
AIR	10 <sup>3</sup> m <sup>3</sup>	Air
ALKWTR	m <sup>3</sup>	Alkaline Water
ASP	m <sup>3</sup>	Alkaline Surfactant Polymer
BRINE	m <sup>3</sup>	Brine
BRKWTR	m <sup>3</sup>	Brackish Water
C1-MX	m <sup>3</sup>	Methane Mix
C2-MX	m <sup>3</sup>	Ethane Mix
C2-SP	m <sup>3</sup>	Ethane Spec
C3-MX	m <sup>3</sup>	Propane Mix
C3-SP	m <sup>3</sup>	Propane Spec
C4-MX	m <sup>3</sup>	Butane Mix
C4-SP	m <sup>3</sup>	Butane Spec
C5-MX	m <sup>3</sup>	Pentane Mix
C5-SP	m <sup>3</sup>	Pentane Spec
CO2	10 <sup>3</sup> m <sup>3</sup>	Carbon Dioxide
CO2-MX	10 <sup>3</sup> m <sup>3</sup>	Carbon Dioxide Mix
COND	m <sup>3</sup>	Condensate
DIESEL	m <sup>3</sup>	Diesel Oil
FSHWTR	m <sup>3</sup>	Fresh water
GAS	10 <sup>3</sup> m <sup>3</sup>	Gas
HELIUM	10 <sup>3</sup> m <sup>3</sup>	Helium
HYDGN	10 <sup>3</sup> m <sup>3</sup>	Hydrogen
IC4-MX	m <sup>3</sup>	Iso-Butane Mix
IC4-SP	m <sup>3</sup>	Iso-Butane Spec
IC5-MX	m <sup>3</sup>	Iso-Pentane Mix
IC5-SP	m <sup>3</sup>	Iso-Pentane Spec
N2	10 <sup>3</sup> m <sup>3</sup>	Nitrogen



## Volumetric Product Codes, cont'd

General Information		
Product Code	Unit of Measurement	Description
Naphtha	m <sup>3</sup>	Naphtha
NC4-MX	m <sup>3</sup>	Normal Butane Mix
NC4-SP	m <sup>3</sup>	Normal Butane Spec
NC5-MX	m <sup>3</sup>	Normal-Pentane Mix
NC5-SP	m <sup>3</sup>	Normal-Pentane Spec
O2	10 <sup>3</sup> m <sup>3</sup>	Oxygen
OIL	m <sup>3</sup>	Crude Oil
POLYMER	m <sup>3</sup>	Polymer
SAND	m <sup>3</sup>	Sand
SOLVENT	m <sup>3</sup>	Solvent
SO2	10 <sup>3</sup> m <sup>3</sup>	Sulphur Dioxide
SUL	tonne	Sulphur
SURF	m <sup>3</sup>	Surfactant
SYNCRD	m <sup>3</sup>	Synthetic Crude
WASTE	m <sup>3</sup>	Waste
WATER	m <sup>3</sup>	Water



## Appendix E - Stream Type Codes

Stream Type ID	Stream Type Description
BR	Bow River
F	Fosterton
KSW	Kerrobot Sweet
LLB	Lloydminster Blend
LLK	Lloydminster Kerrobot
LSB	Light Sour Blend
M	Midale Blend
MSM	Westpur Midale
SC	Smiley Coleville Heavy
MSW	Mixed Sweet Blend
UMC	Portal Midale
UOC	U.S. Sour - Clearbrook
WCB	Western Canadian Blend
WCS	Western Canadian Select



## Appendix F – Activity Codes

Items in *italics* are not valid for data submission, but will be calculated by Petrinex.  
 Items shown with an asterisk (\*) can be submitted only when associated with a non-reporting facility such as a disposition to a MB facility or for specific circumstances i.e. Gas to a WP.

<b>Activity Code</b>	<b>Description</b>	<b>Valid Facility Types</b>
<i>DIFF</i>	<i>Difference</i>	<i>All except WP</i>
<i>DISP *</i>	<i>Disposition</i>	<i>All</i>
EMIS	Emission	BT, CT, GP, GS, IF, WT
FIRE	Fire	All except WP
FLARE	Flare	All
FRAC	Fractionate	GP
FUEL	Fuel	All
<i>IMBAL</i>	<i>Imbalance</i>	<i>All</i>
INJ	Injection	IF
INVADJ	Inventory Adjustment	All
INVCL	Inventory Close	All
<i>INVOP</i>	<i>Inventory Open</i>	<i>All</i>
LDINJ	Load injection	BT
LDINVADJ	Load inventory adjustment	BT
<i>LDINVCL</i>	<i>Load inventory close</i>	<i>BT</i>
<i>LDINVOP</i>	<i>Load inventory open</i>	<i>BT</i>
LDREC	Load recovered	BT
<i>PROC</i>	<i>Process to create product</i>	<i>GP</i>
PROD	Production	BT, WT
<i>PURDISP *</i>	<i>Purchase Disposition</i>	<i>BT</i>
PURREC	Purchase Receipt	BT
REC	Receipt	All
<i>SHR</i>	<i>Shrinkage</i>	<i>BT, CT, GP, PL, TM</i>
SHUTIN	Shut in	All
SPILL	Spillage	All except WP
STINJ	Storage Facility Injection	IF
STINVADJ	Storage Facility Inventory Adjustment	IF
STINVCL	Storage Facility Close	IF
<i>STINVOP</i>	<i>Storage Facility Open</i>	<i>IF</i>
STREC	Storage Facility Recovered	BT
THEFT	Theft	All
VENT	Vent	All





## Appendix G – Waste Codes

Waste Code	Waste Code Description
ACID	Acid Solutions (unneutralized)
ACTCRB	Activated Carbon
ASBEST	Asbestos
BATT	Batteries (Wet and Dry Cell)
BLBDWT	Boiler Blowdown Water
BRKWTR	Saline Water/Brackish Water - TDS > 4000 ppm
CATNS	Catalyst (Non-Sulphur)
CATSU	Catalyst (Sulphur)
CAUS	Caustic Solutions (unneutralized, spent)
CEMENT	Cement (Returns Dry)
COEMUL	Crude Oil/Condensate Emulsions (residuals after treatment)
CONMAT	Construction and Demolition Material
CORINH	Corrosion Inhibitor/Oxygen Scavenger Solutions
CWATER	Waters Contaminated (leachate, collected surface waters)
DESICT	Dessicant
DMDS	Dimethyl Disulphide Solutions
DOMWST	Garbage/Domestic Waste
DRWSHC	Drilling Waste Hydrocarbon
DRWSGC	Drilling Waste Gel Chemical
DRWSAC	Drilling Waste Advanced Gel Chemical
EMTCON1	Aerosol Cans
EMTCON2	Barrels, Pails
EMTCON3	Crude Oil Sample Bottles
EMTCON4	Cutting Oil Tubes
EMTCON5	Grease Cartridges
EMTCON6	Mud Sacks - Drilling
EMTCON7	Paint Cans/Brushes
EMTCON8	Pipe Dope Containers/Brushes
FILAPC	Filters - Air Pollution Control
FILFWT	Filters - Raw/Fresh Water
FILGLY	Filters Glycol
FILLUB	Filters - Lube Oil (Waste Type 201)
FILMTH	Filters - Methanol
FILOTH	Filters - Other (Raw/Fuel Gas, NGL's)
FILPWT	Filters - Produced/Process Water
FILSWT	Filters - Gas Sweetening (MEA, DEA, MDEA, Sulphinol)



## Appendix G – Waste Codes, cont'd

Waste Code	Waste Code Description
FILWTT	Filters (Media) - Water Treatment
FLBWSW	Filter Backwash Liquids (Gas Sweetening)
FLBWWT	Filter Backwash Liquids (Water Treatment)
FRCSND	Frac Sand - Non-Radioactive
FRFLDH	Frac Fluid (Hydrocarbon Based)
FRFLDR	Frac Fluid Radioactive
FRFLDW	Frac Fluid (Water Based)
FRMFNS	Residual formation fines after treatment and settlement
FRSDR	Frac Sand - Radioactive (Plus other Radioactive Diagnostic Materials)
FSHWTR	Non-Saline Water/Fresh Water - TDS < 4000 ppm
GLYC	Glycol Solutions (No Heavy Metals)
GLYCHM	Glycol Solutions (Containing Lead or other Heavy Metals) (Waste Type 202)
HSPWTR	High Solids Produced Water (produced water with entrained well bore fines - no chemicals or other materials added)
HYDOIL	Hydraulic and Transmission Oil
HYDVCH	Hydrovac Material (chemical/solvent impacted)
HYDVCO	Hydrovac Material (crude oil/condensate impacted)
HYDVHM	Hydrovac Material (mercury/heavy metal impacted)
HYDVPT	Hydrovac Material (pesticide/herbicide impacted)
HYDVPW	Hydrovac Material (produced/salt water impacted)
HYDVRO	Hydrovac Material (refined fuels/oils impacted)
HYDVSU	Hydrovac Material (sulphur impacted)
HYDVEM	Hydrovac Material (emulsion impacted)
IEXLIQ	Ion Exchange Resin Regenerant Liquids
IEXRES	Ion Exchange Resin
INCASH	Incinerator Ash
INOCHM	Chemicals (Inorganic)
IRNSPG	Iron Sponge
LDDOPE	Lead Based Products (Pipe Dope/Greases)
LDTAPE	Lead Based Products (H2S Sensing Tape)
LUBOIL	Lubricating Oil (Hydrocarbon and Synthetic)
METHNL	Hydrotest Fluids - Methanol
MNFCTR	Manufacture
NONOFD	Non-Oilfield Waste
NORM	Naturally Occurring Radioactive Materials - NORMs



## Appendix G – Waste Codes, cont'd

<b>Waste Code</b>	<b>Waste Code Description</b>
OILABS	Absorbants
OILRAG	Rags
ORGCHM	Chemicals (Organic)
PCBBAL	Polychlorinated Biphenyls (PCBs) - Fluorescent Light Ballasts
PCBLIQ	Polychlorinated Biphenyls (PCBs) Askarel Liquids
PCBSGI	Polychlorinated Biphenyls (PCBs) - Contaminated Solids > 1000 ppm
PCBSLF	Polychlorinated Biphenyls (PCBs) - Contaminated Solids < 50 ppm
PCBSLI	Polychlorinated Biphenyls (PCBs) - Contaminated Solids > 50 ppm < 1000 ppm
PIGWST	Pigging Waste (Liquid and Wax)
PSTCON	Pesticide/Herbicide Containers
PSTHRB	Pesticides/Herbicides
PWTRHM	Water - Process (with Heavy Metals)
PWTROR	Water Process (with Organic Chemicals)
SALT	Salt Heat Medium
SAND	Sand - Produced
SLGCTW	Sludge - Cooling Tower
SLGEML	Sludge - Emulsion
SLGGLY	Sludge - Glycol/Gas Drying
SLGHYD	Sludge - Hydrocarbon
SLGLIM	Sludge - Lime
SLGPIT	Sludge - Flare Pit
SLGPRO	Sludge - Process
SLGSUL	Sludge - Sulphur
SLGSWT	Sludge - Gas Sweetening Systems
SMETAL	Metal (Scrap)
SOILCH	Contaminated Debris and Soil (Chemical/Solvent)
SOILCO	Contaminated Debris and Soil (Crude Oil/Condensate)
SOILEM	Contaminated Debris and Soil (Emulsion)
SOILHM	Contaminated Debris and Soil (Mercury/Metals)
SOILPT	Contaminated Debris and Soil (Pesticide/Herbicide)
SOILPW	Contaminated Debris and Soil (Produced/Salt Water)
SOILRO	Contaminated Debris and Soil (Refined Fuels/Oils)
SOILSU	Contaminated Debris and Soil (Sulphur)
SOLALP	Solvents/Residues (Non-Halogenated Aliphatic)
SOLARO	Solvents/Residues (Non-Halogenated Aromatic)



## Appendix G – Waste Codes, cont'd

<b>Waste Code</b>	<b>Waste Code Description</b>
SOLHAL	Solvents/Residues (Halogenated)
SWTLIQ	Sweetening Agents (Liquids)
SWTSOL	Sweetening Agents (Solids)
THPROT	Thread Protectors - Casing/Tubing
TRTHAY	Treater Hay
WASTE	Special waste code for a waste plant disposing to/receiving from another waste plant or injection facility.
WATER	Water - Produced (Including Brine Solutions)
WOODCT	Wood (Chemically Treated/Cooling Tower)
WPAINT	Paints
WSHORG	Wash Fluids - Organic
WSHWTR	Wash Fluids - Water
WSTCGS	Waste Compressed or Liquified Gases
WSTCLQ	Waste Corrosive Liquid
WSTCSO	Waste Corrosive Solid
WSTFLQ	Waste Flammable Liquid
WSTFSD	Waste Flammable Solid
WSTMIS	Waste - Miscellaneous
WSTOLQ	Waste Oxidizing Liquid
WSTOSD	Waste Oxidizing Solid
WSTPLQ	Waste Poisonous Liquid
WSTPSD	Waste Poisonous Solid
WSTRDM	Waste Radioactive Material
WWOFLD	Well Workover Fluids